

Gargoyle Investigator™

Enterprise Module

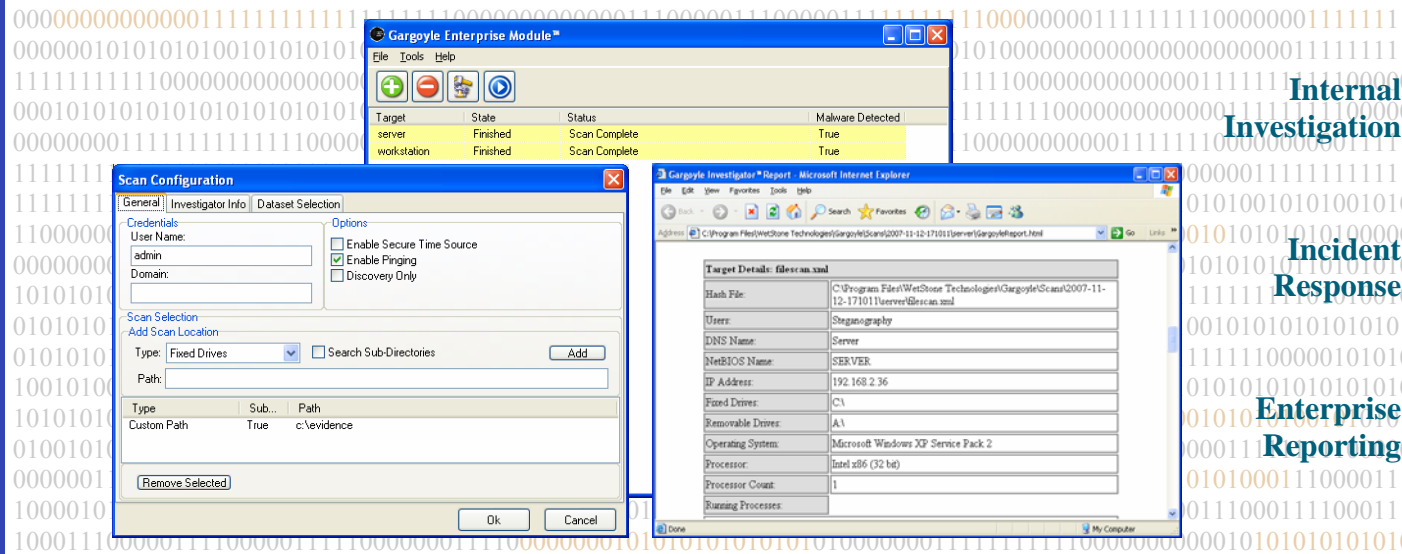
Enterprise Malware Investigation



Internal Investigation

Incident Response

Enterprise Reporting



Gargoyle Enterprise Module (GEM) provides corporate IT departments, incident response investigators, or organizations with large and complex networks, the ability to fight against malicious software within enterprise computing environments. GEM is designed to quickly target systems under investigation, collecting hashes of files found on suspect systems. The resulting collection is then analyzed by Gargoyle Investigator Forensic Pro, providing investigators significant details about each targets activities, motives, and intent. As enterprise networks continue to expand in numbers and geographic locations, investigators need a tool that will acquire forensic evidence from targets anywhere, anytime throughout the enterprise.

Key Features:

- Perform enterprise wide collection of malicious code hashes on multiple targets simultaneously
- Includes a single user license of Gargoyle Investigator™ Forensic Pro
- Dataset Creator™ - create and build your own categories for detection
- Interoperates with popular forensic tools such as EnCase™ and FTK™
- Timestamped enterprise discovery reports for each target suspected



System Recommendations:

- Microsoft Windows® 2000
- 230 MB free disk space
- 1 GB RAM
- Pentium® III 1GHz processor
- Gargoyle Investigator™ Forensic Pro

License:

- Enterprise license with 10 scan option, additional scans of 25, 50 and 100 are available

Free software maintenance for one year from the date of purchase!



Cornell Business and Technology Park · 20 Thornwood Dr., Suite 105 · Ithaca, NY 14850

1-877-WETSTONE · www.wetstonetech.com